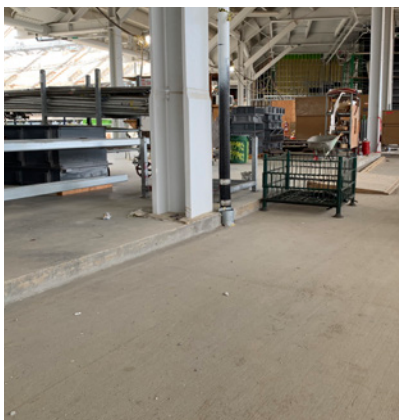
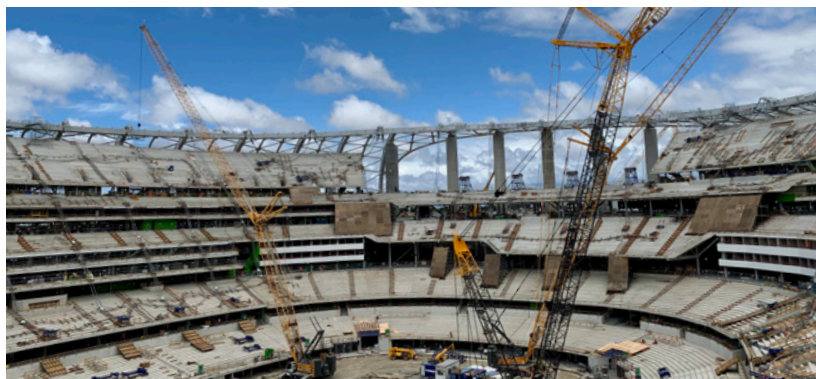
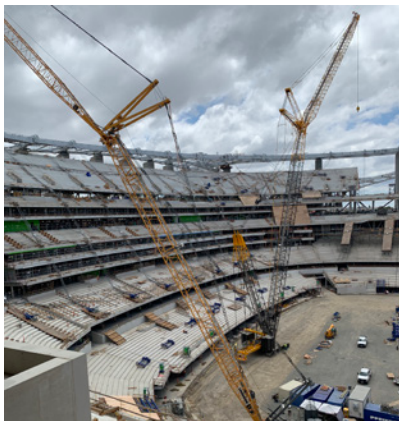




EUCLID CHEMICAL

## PROJECT PROFILE

# SOFI STADIUM



## PROJECT DATA

**Location** – Inglewood, CA

**Application** – Fiber Reinforcement in Topping Slabs

**General Contractor** – Turner Construction /  
AECOM Hunt (Joint Venture)

**Concrete Contractor** – Morley Builders

**Architect** – HKS, Inc.

**Engineer** – Walter P. Moore

**Ready Mix Producer** – CalPortland

## PRODUCTS FEATURED

**TUF-STRAND™ SF**

Synthetic Macrofiber

## SCOPE OF PROJECT

Synthetic macrofiber reinforcement for topping slabs and crack control



Photo courtesy of therams.com

## PROJECT SUMMARY

SoFi Stadium is the new home to the Los Angeles Rams and Los Angeles Chargers football teams. The stadium seats 70,240 spectators for most events, with the ability to expand it with 30,000 additional seats for larger events. It is located at the former site of the Hollywood Park Racetrack in Inglewood, 3 miles (4.8 km) from Los Angeles International Airport. TUF-STRAND SF at a dosage of 5 lb/yd<sup>3</sup> (3 kg/m<sup>3</sup>) was used as the reinforcement in topping slabs for the upper level decks of this facility. These fiber-reinforced slabs, as opposed to conventionally reinforced slabs, will not have the potential for corrosion over the lifetime of this facility. TUF-STRAND SF synthetic macrofiber was also used to provide improved crack control for this topping slab. Additionally, construction time was reduced as the use of TUF-STRAND SF eliminated the time to crane lift and install welded wire fabric or reinforcing steel, and job-site safety was improved by eliminating a potential tripping hazard for the concrete placement crew.