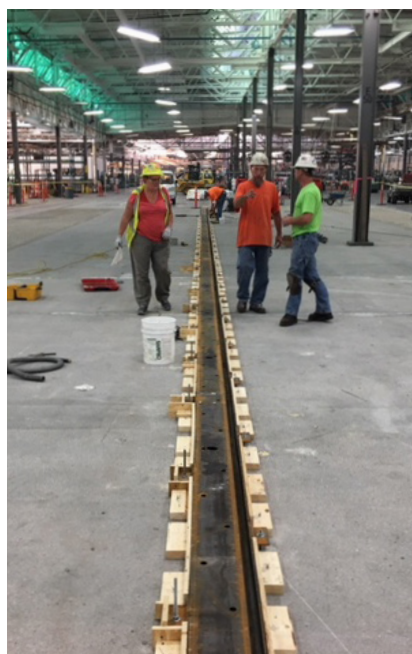
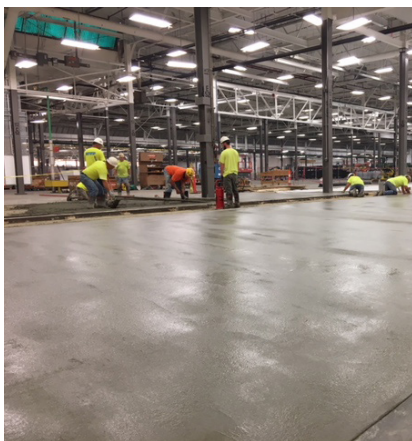




**EUCLID CHEMICAL**

## PROJECT PROFILE

# JOHN DEERE HARVESTER PLANT



## PROJECT DATA

**Location** – East Moline, IL  
**Applicator** – Curry Construction  
**Architect/Engineer** – John Deere  
**Material Supplier** – Stetson Building Products  
**Contractor** – Estes Construction  
**Total Area** – 13,000 ft<sup>2</sup>

## PRODUCTS FEATURED

**EucoFloor 202**  
Wear, Impact, and Abrasion Resistant Floor Topping

**E<sup>3</sup>-Flowable**  
High-Flow Epoxy Grout

**EucoFloor Epoxy Primer**  
Epoxy Primer and Bonding Agent for Concrete Toppings

## SCOPE OF PROJECT

- Provided a wear resistant topping over an elevated slab from 3.5 in to 0.75 in
- Epoxy grout an 8 in rail in the middle of the EucoFloor 202.

## PROJECT SUMMARY

During a job site visit, John Deere inquired if Euclid Chemical could provide a long term solution to restore the assembly line rail grout and re-surface 13,000 ft<sup>2</sup> of an elevated slab in their East Moline, IL Harvester Plant. They tried several materials over the years, but were not satisfied with previous results. The project consisted of replacing and grouting underneath 240 ft of steel rail that carries the combine equipment through the assembly line. In addition to the rail grouting, 13,000 ft<sup>2</sup> of elevated slab needed to be re-surfaced with a durable, abrasive resistant cementitious topping that could be installed with a grade of 3.5 in near the steel rail and tapering down to 0.75 in near the existing slab-on-grade surrounding the pour. EucoFloor 202 and E<sup>3</sup>-Flowable were recommended and accepted by John Deere for this restoration project. Due to the size of the pour, EucoFloor 202 was supplied in 3000 lb supersacks and mixed in ready mix trucks. 130 supersacks of EucoFloor 202 were mixed and placed on this project.